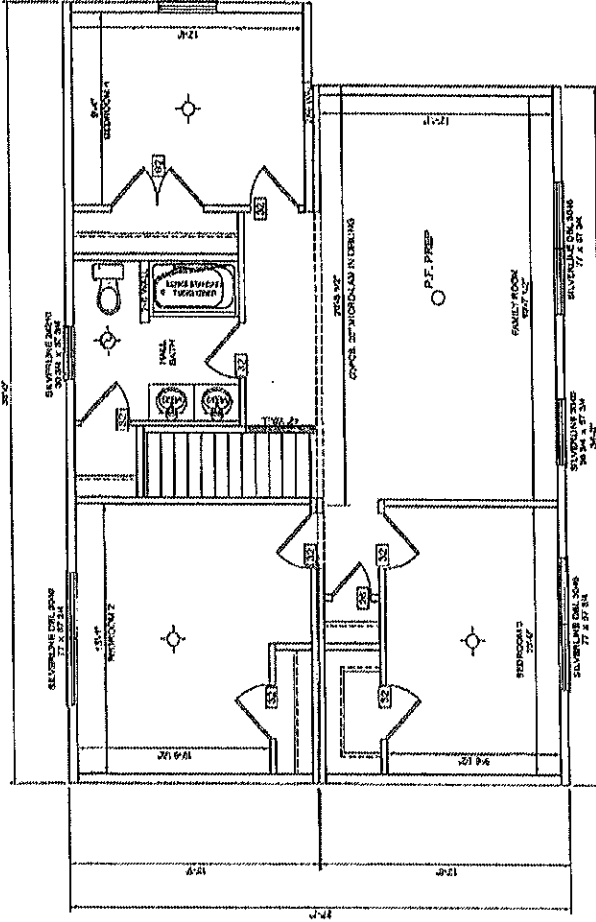


FIRST FLOOR



SECOND FLOOR

LOT MODEL #283 -- Modular 2-Story 27'7" x 34'38" -- 4 Bedrooms / 2.5 Bathrooms -- 2016 Sq. Ft.

Furniture and Sales Tax are NOT INCLUDED

Financing Assistance Available on Land/Home Packages, Park Deals, & Pre-Owned Homes

ASK ABOUT 100% COMPLETE PACKAGE PRICING - JUST MOVE IN - INCLUDING LAND, SITEWORK, SEPTIC SYSTEMS, WELL, CONCRETE

Family Owned & Operated with Over 45 Years in Housing

350 River Street, Montpelier, VT
 Mailing: PO Box 703, Barre, VT 05641
 (802)229-2721 or (800)391-7488

**Vermont's Premier
 Seller of Modular &
 Manufactured Homes**

**Full Warranty Backed
 by Solid Manufacturers
 AND a Solid Dealer**

www.fecteahomes.com