



Modular Cape & Colonial

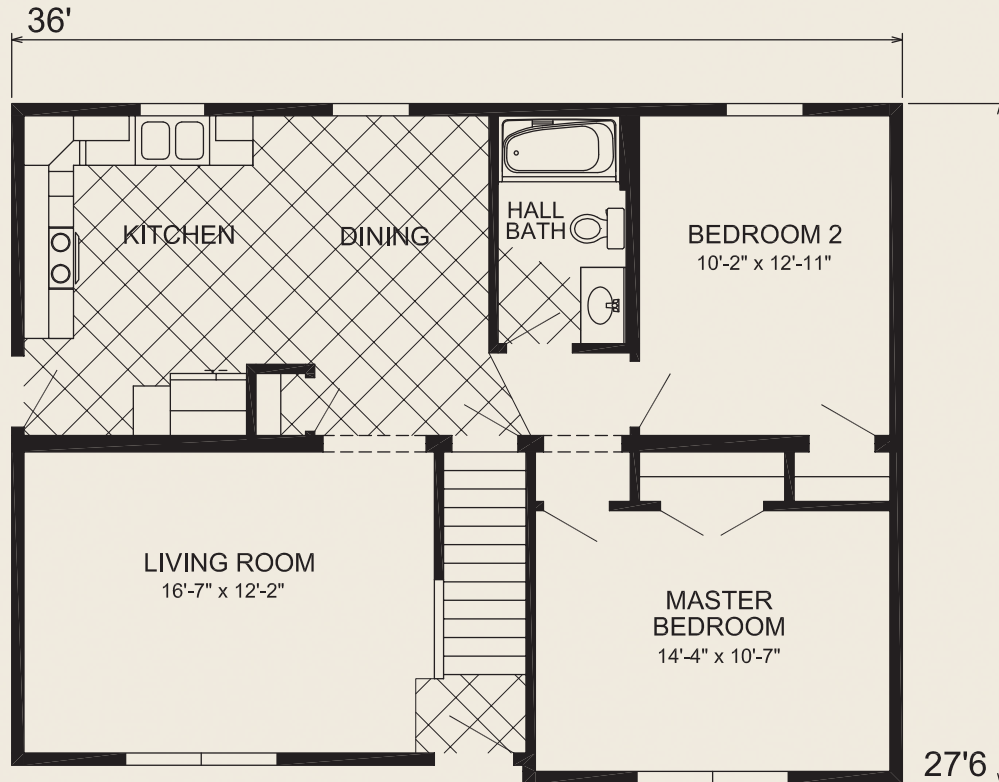


Cape & Chalet



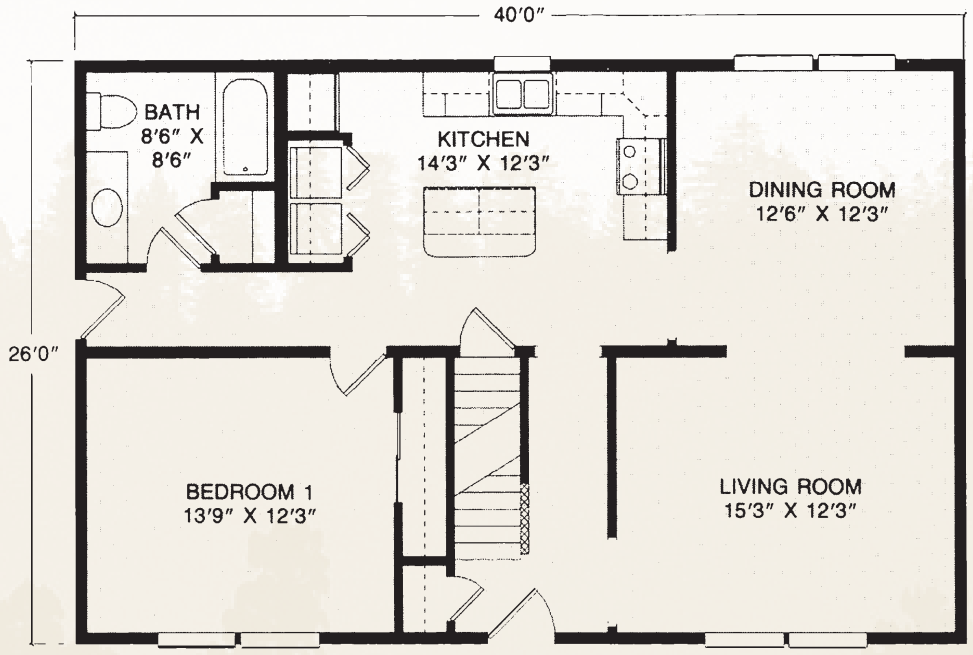
LE-155

27'6" x 36'
2 Bed 1 Bath
936 sq ft



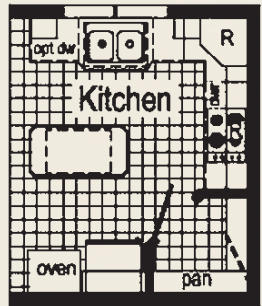
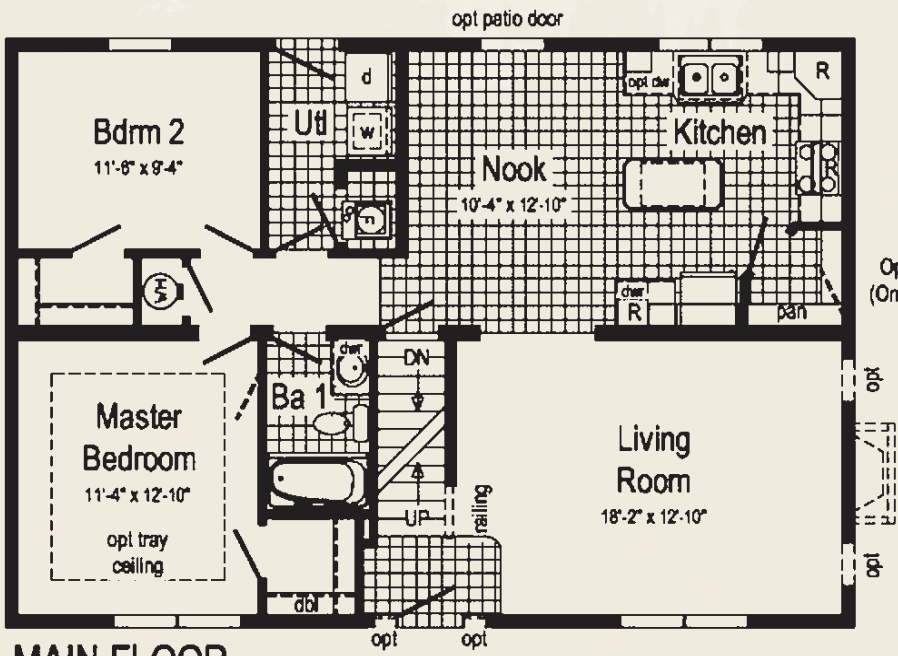
26' x 40'
1 Bed 1 Bath
1040 sq ft

CHESTER

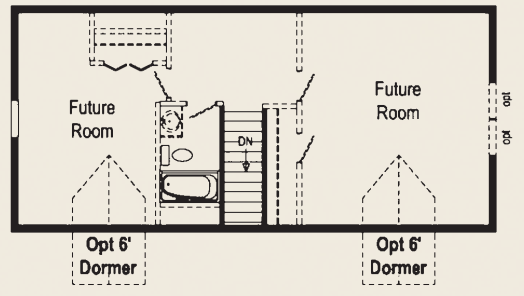


28' x 40'
2 Bed 2 Bath
1093 sq ft

HP104A



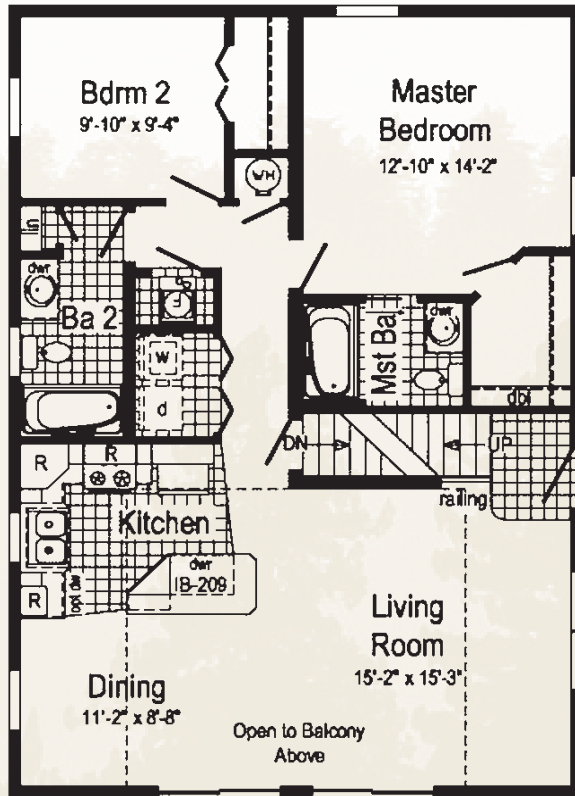
Optional Wall Oven & Surface Unit



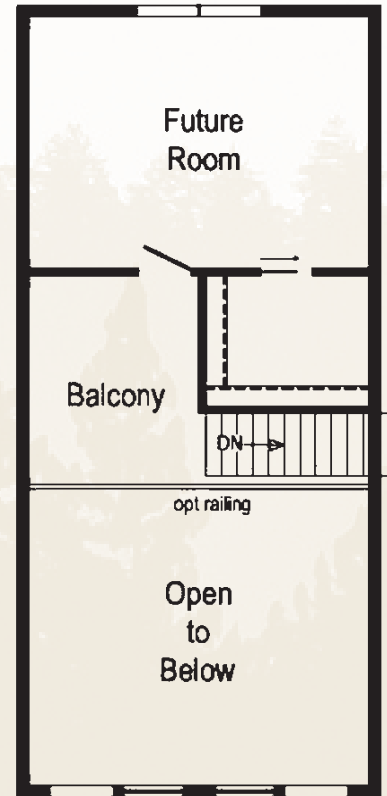
SECOND FLOOR
FINISHED ON SITE BY OTHERS

HP101A

28' x 40'
2 Bed 2 Bath
1093 sq ft



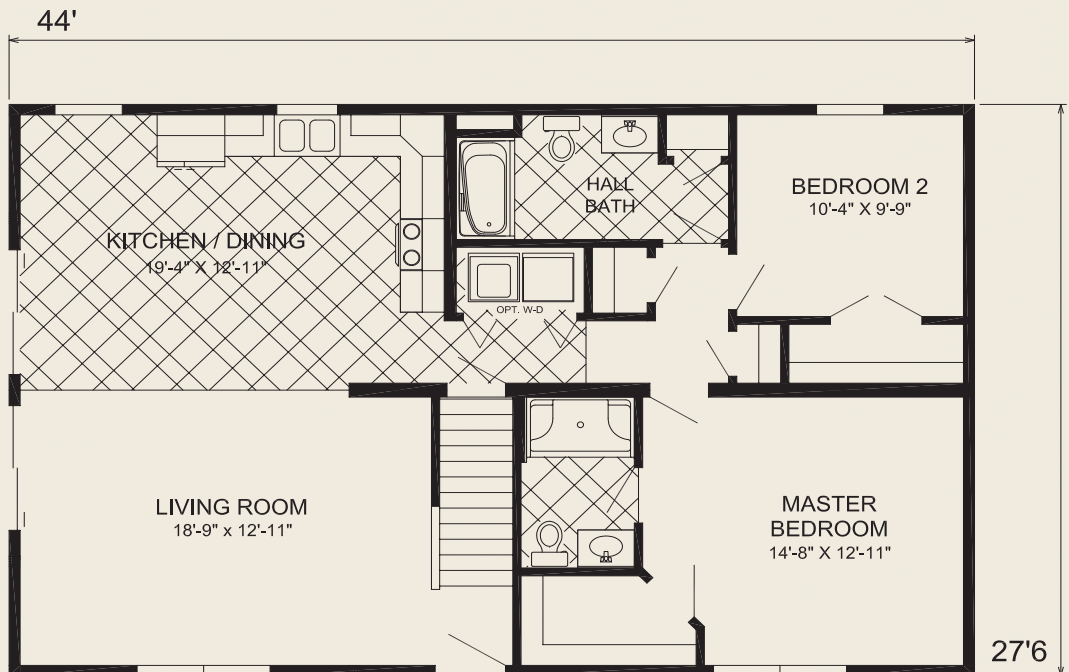
MAIN FLOOR



SECOND FLOOR

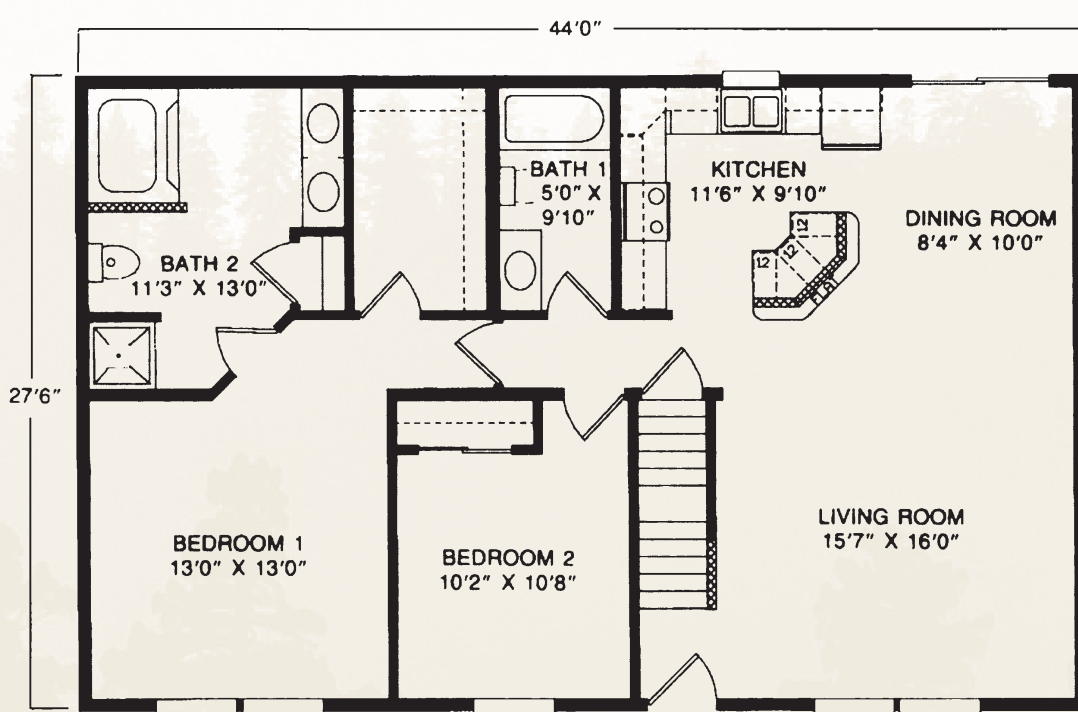
LE-158

27'6" x 44'
2 Bed 2 Bath
1232 sq ft



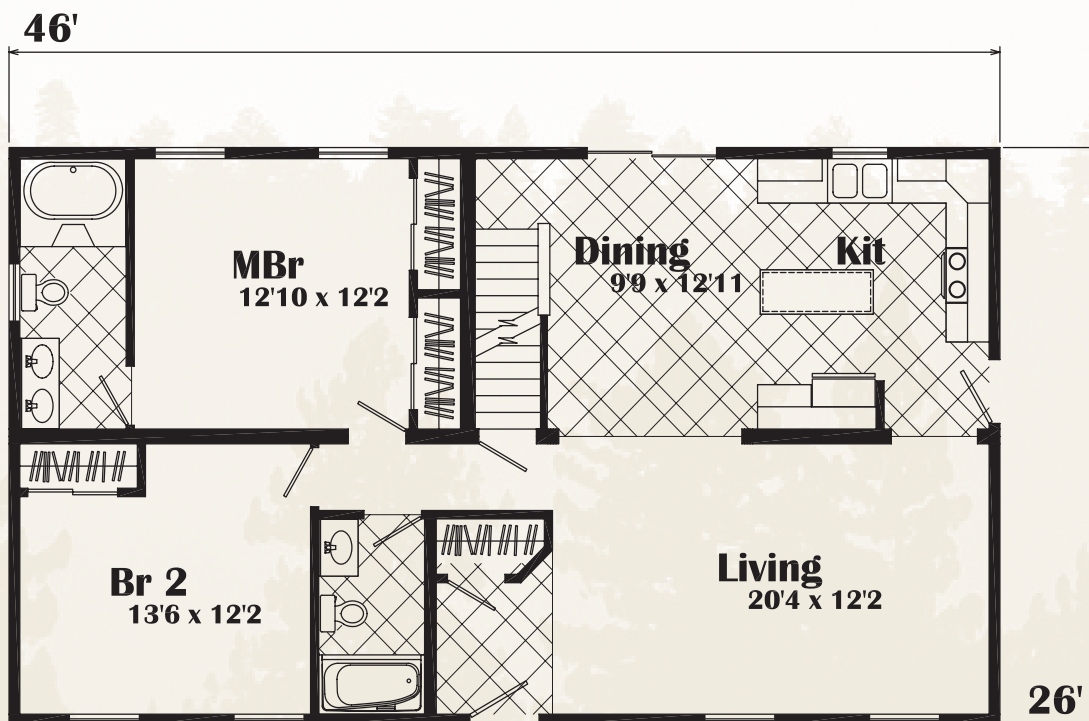
27'6" x 44'
2 Bed 2 Bath
1210 sq ft

BRISTOL



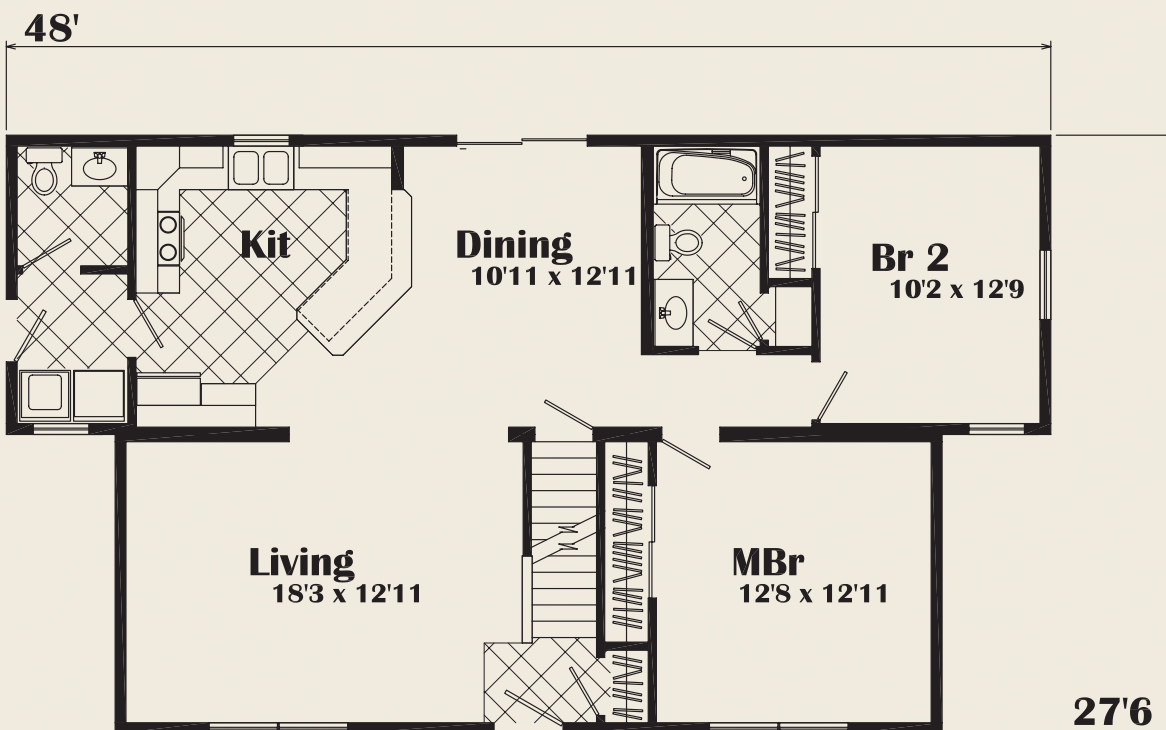
ALTUS

26' x 46'
2 Bed 2 Bath
1196 sq ft



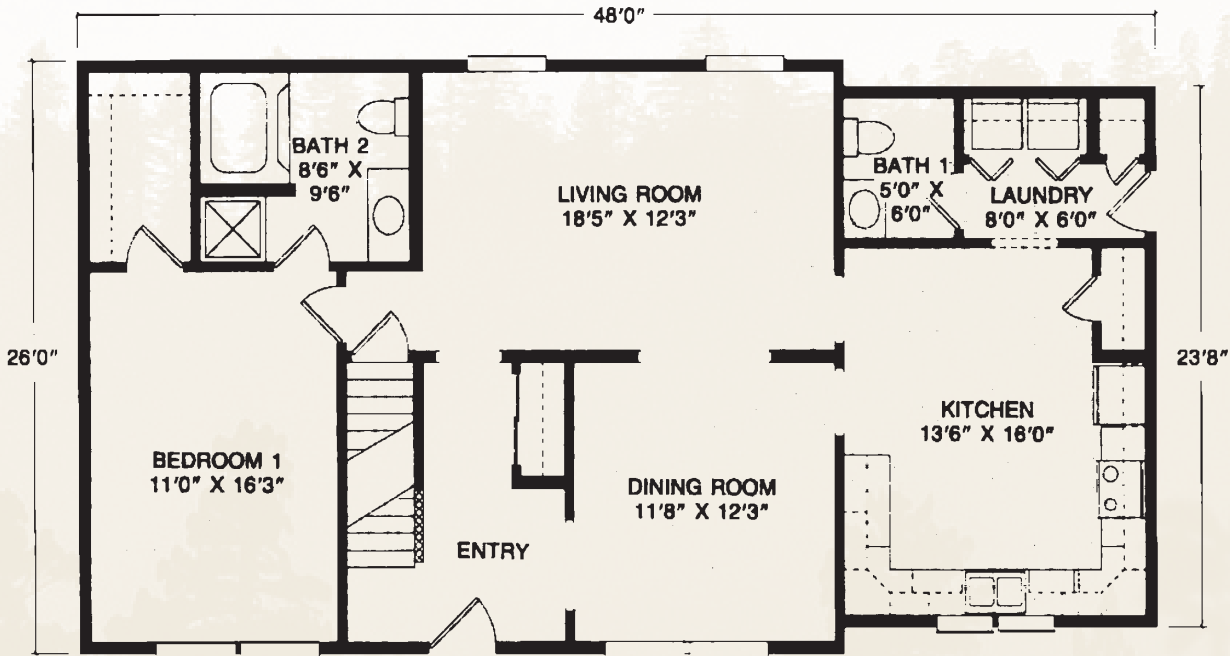
MONTANA

27'6" x 48'
2 Bed 1-1/2 Bath
1176 sq ft



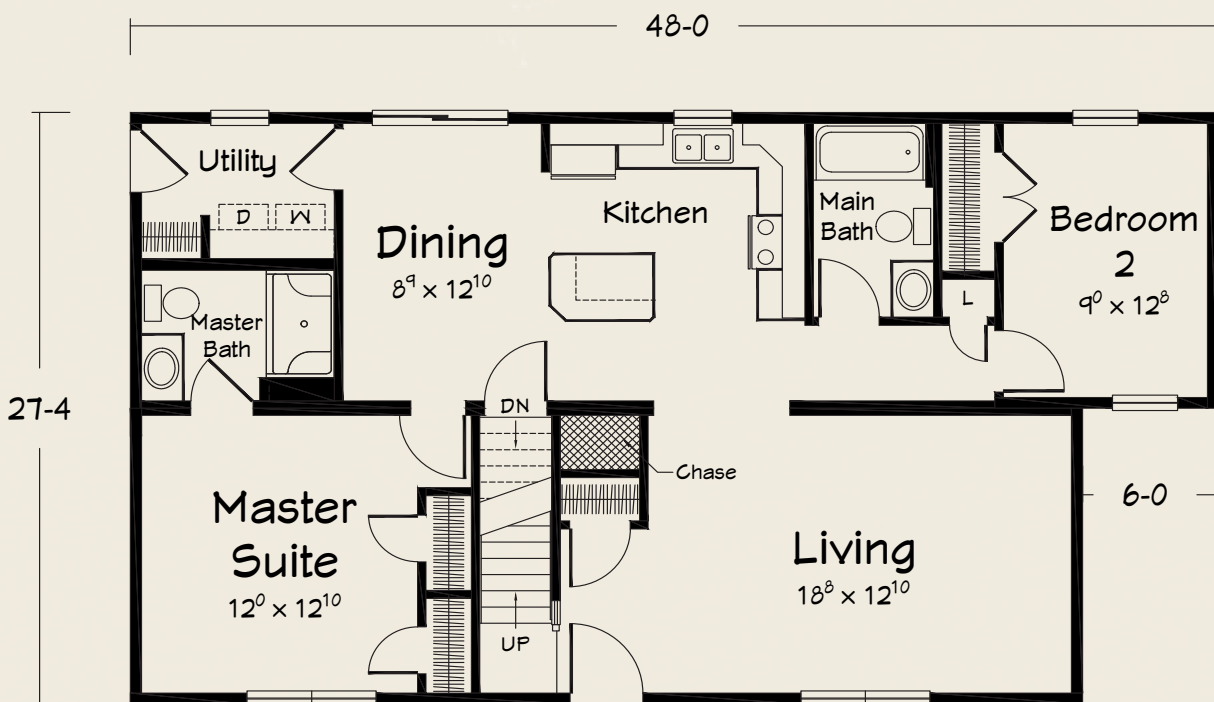
26' x 48'
 1 Bed 1-1/2 Bath
 1214 sq ft

PRESTON



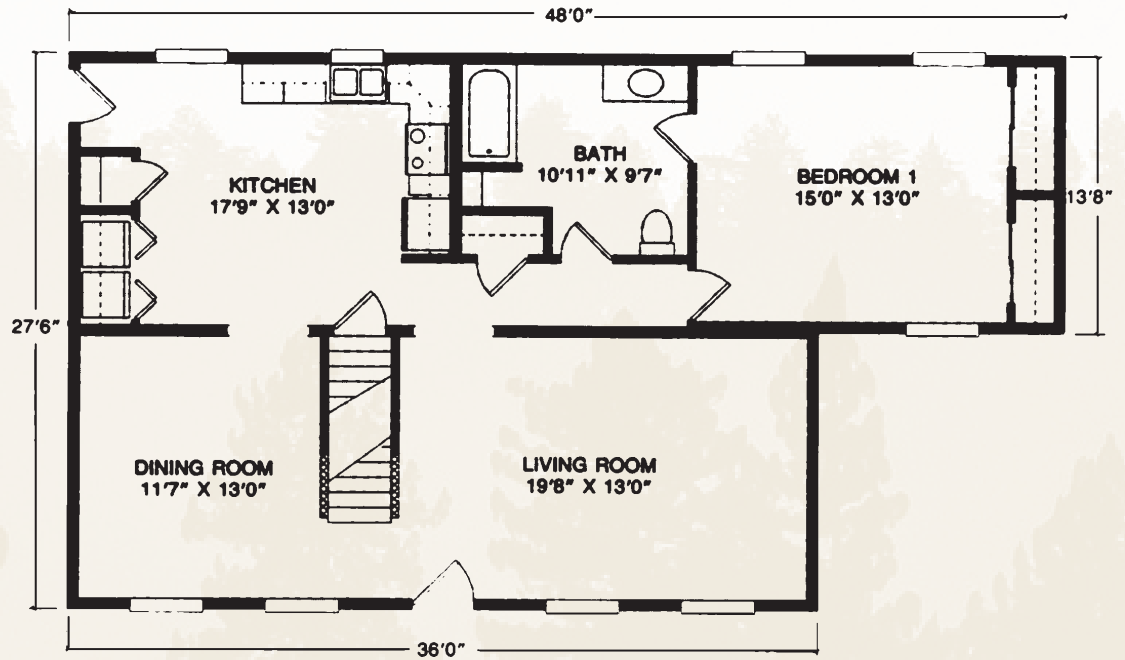
27'4" x 48'
 2 Bed 2 Bath
 1230 sq ft

AZURE BAY



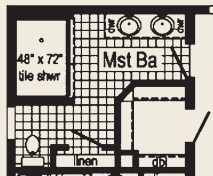
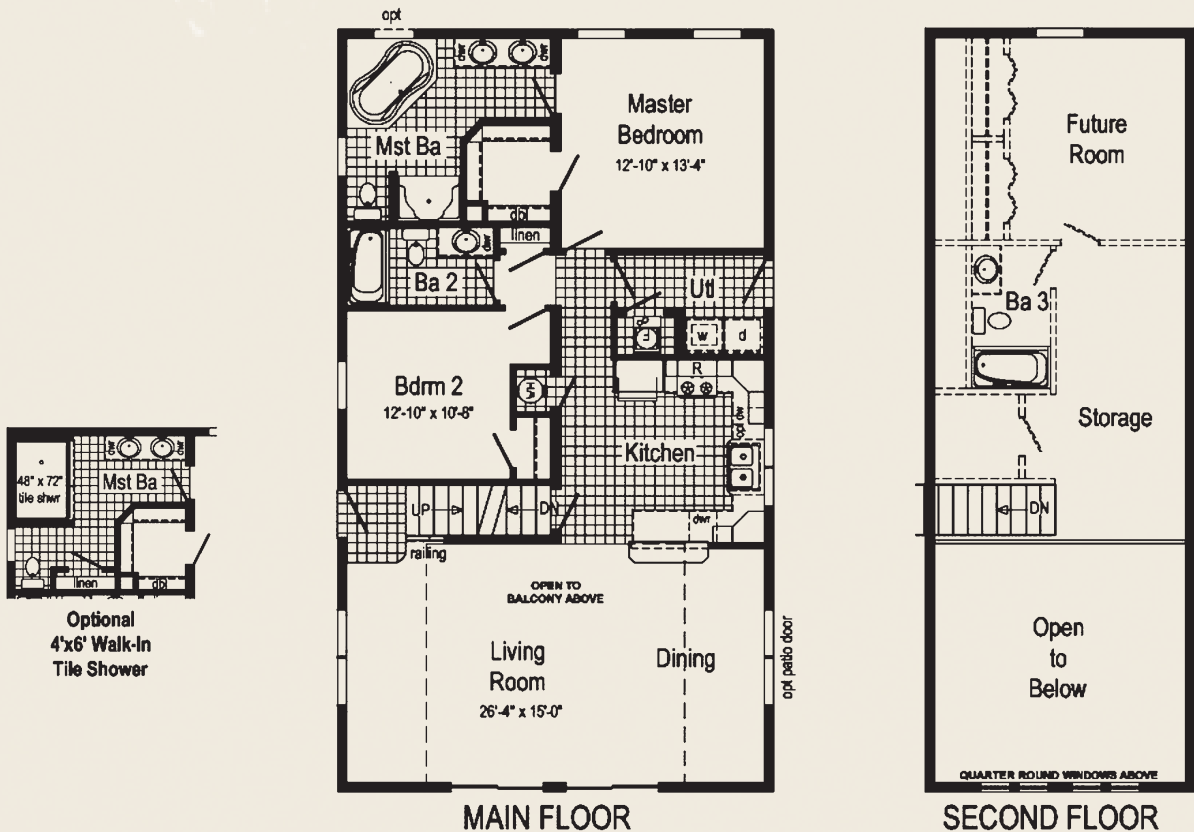
KENNEDY

27'6" x 36'48"
1 Bed 1 Bath
1214 sq ft



HP109A

28' x 48'
2 Bed 2 Bath
1312 sq ft

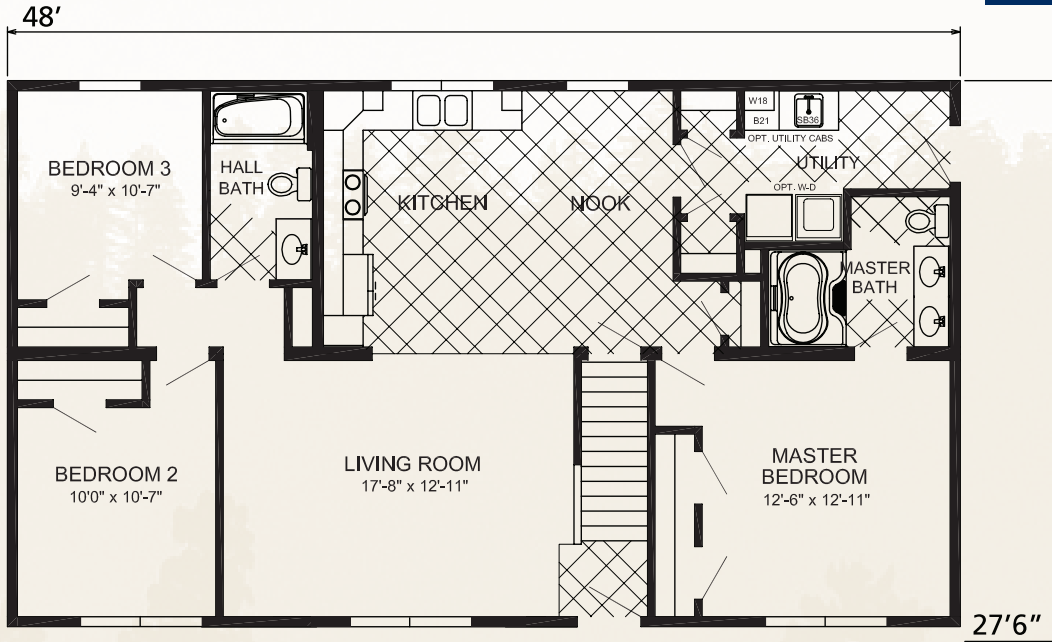


Optional
4'x6' Walk-In
Tile Shower

* BUILT ON-SITE

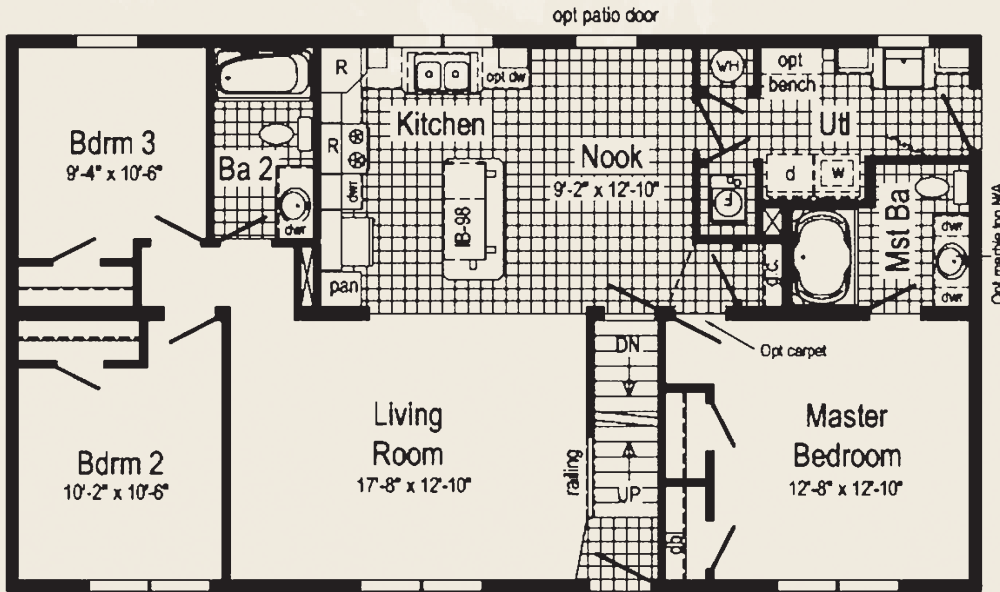
27'6" x 48'
3 Bed 2 Bath
1344 sq ft

LE-157



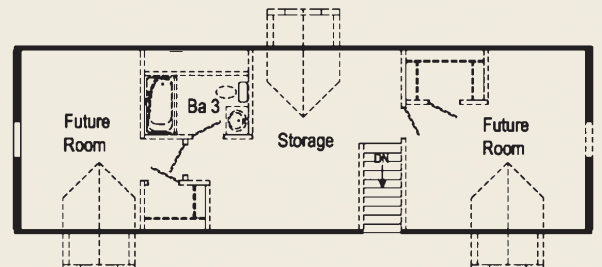
27'4" x 48'
3 Bed 2 Bath
1312 sq ft

HP112A



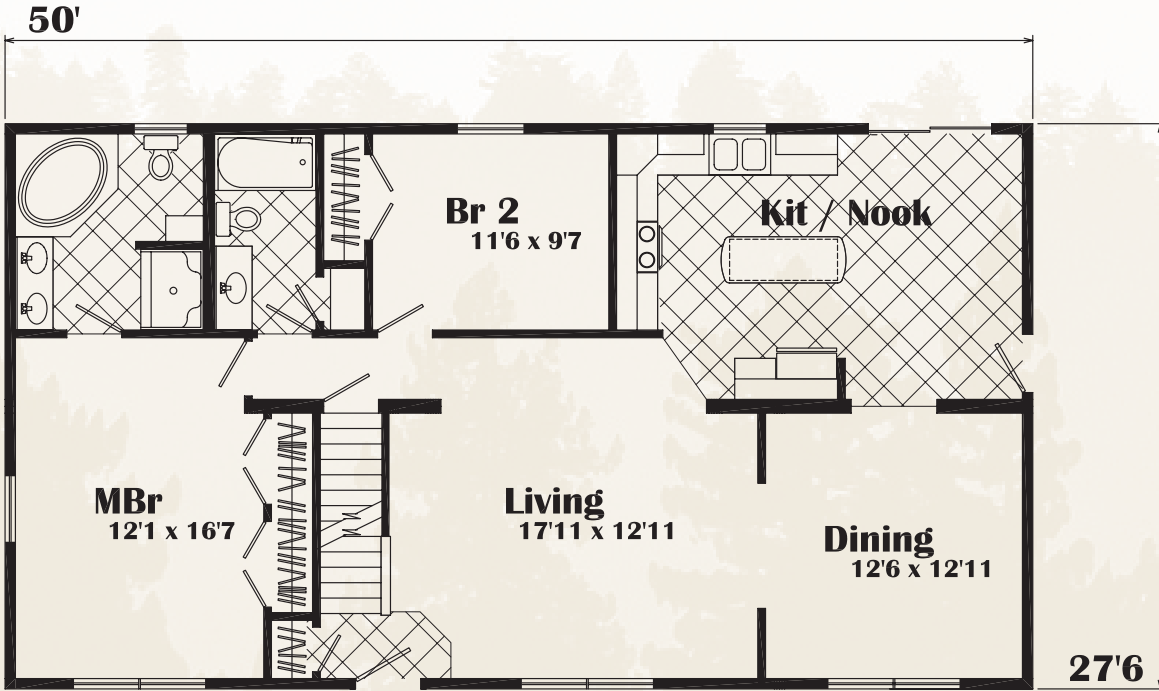
MAIN FLOOR

* PROPOSED
SECOND FLOOR



LUCINDA

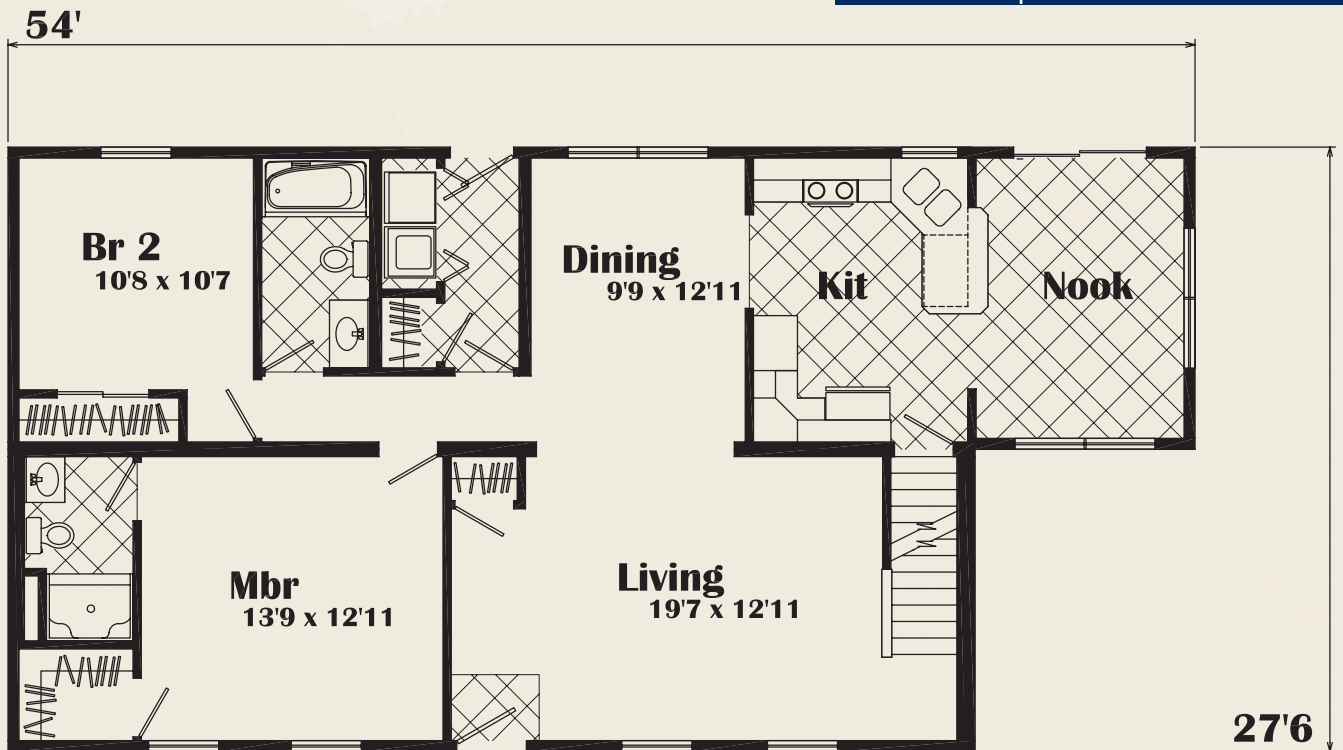
27'6" x 50'
2 Bed 2 Bath
1375 sq ft





27'6" x 54'
 2 Bed 2 Bath
 1347 sq ft

TIMBERRIDGE

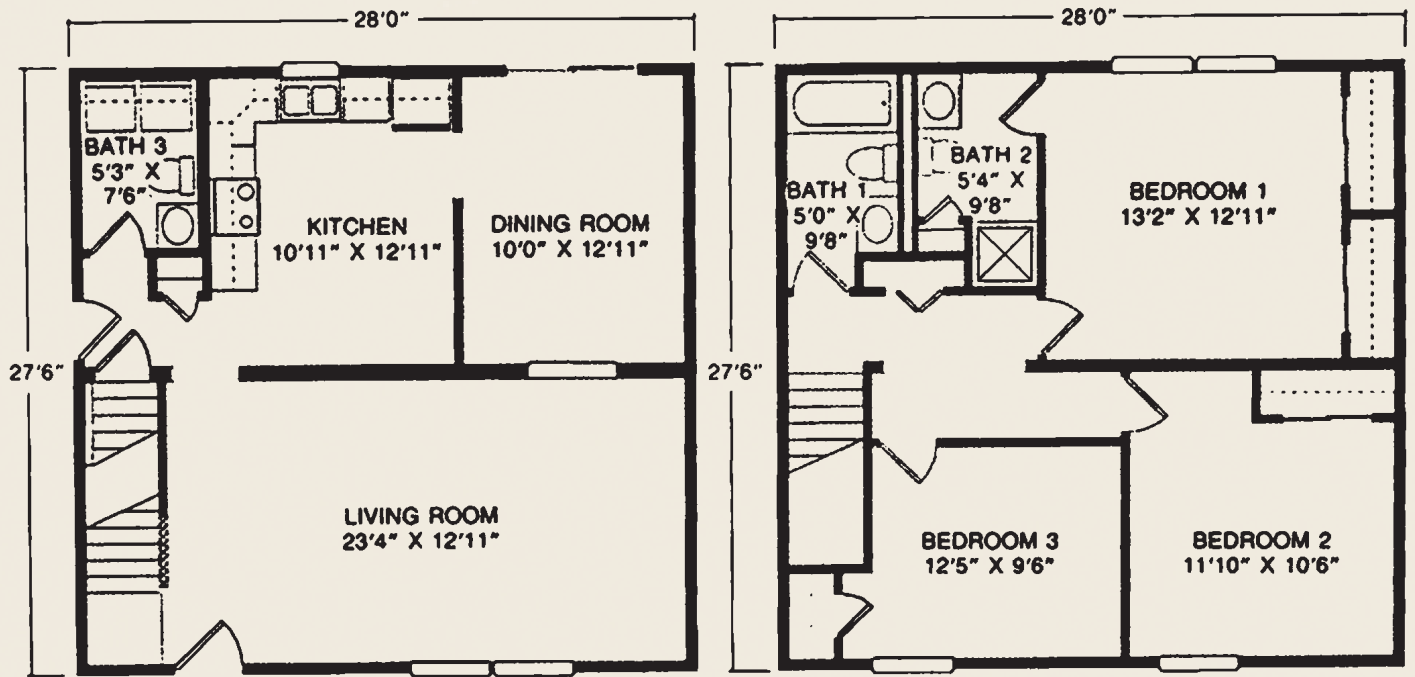


Colonial



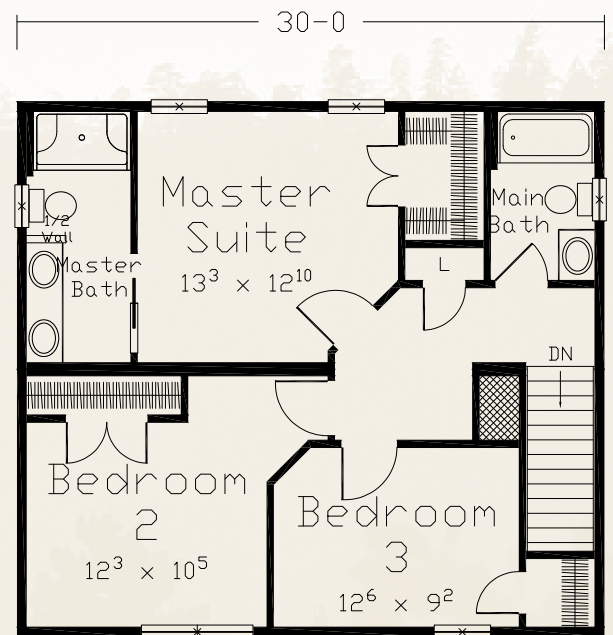
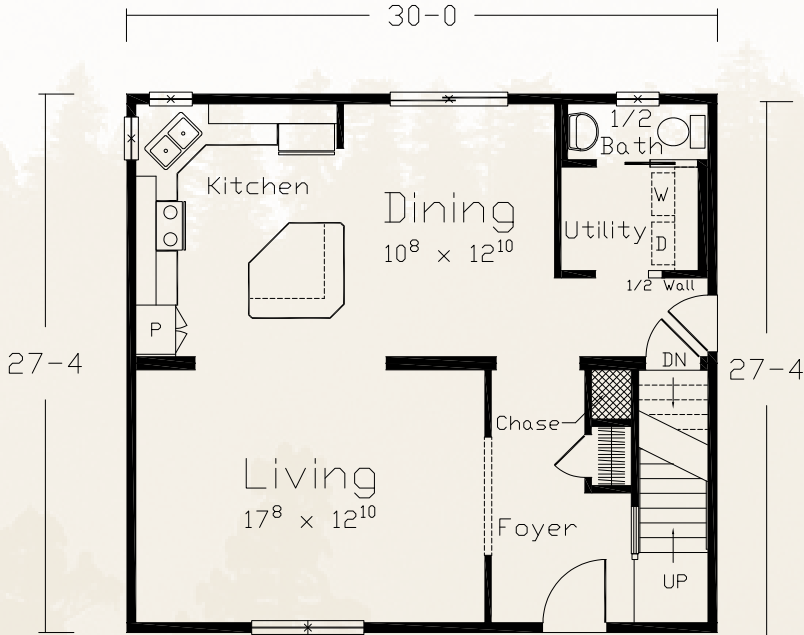
FRANKLIN

27'6" x 28'
3 Bed 2-1/2 Bath
1540 sq ft



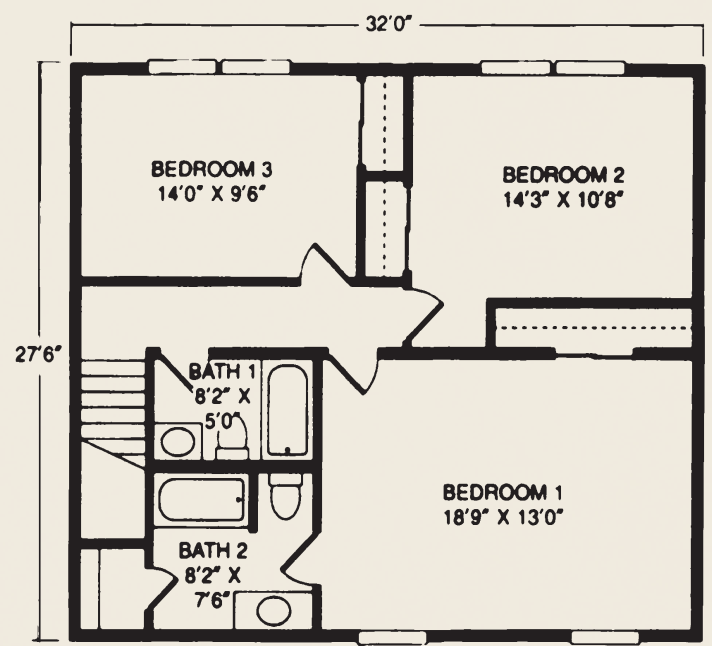
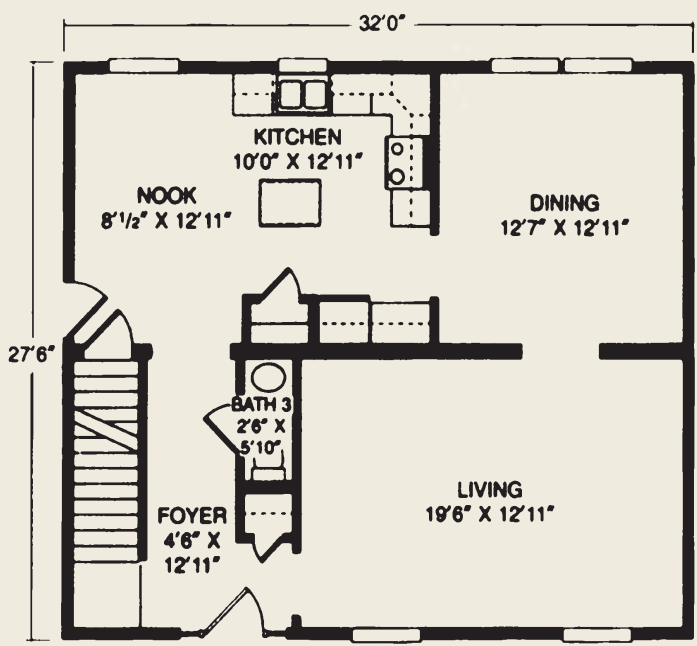
27'4" x 30'
 3 Bed 2-1/2 Bath
 1640 sq ft

SAGE I



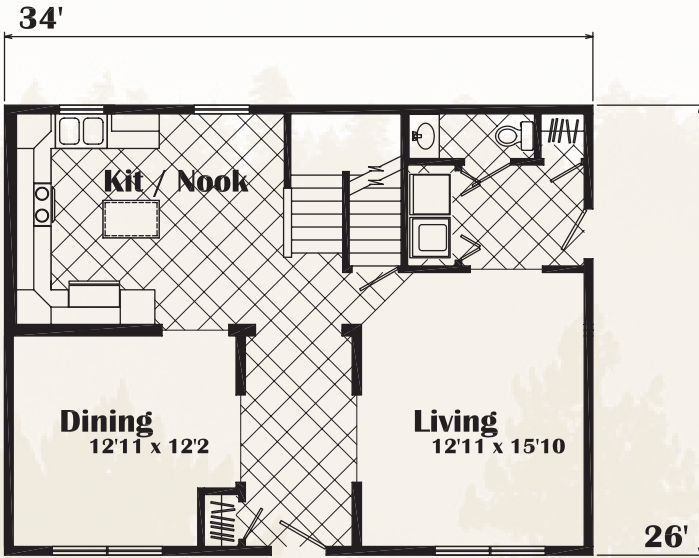
27'6" x 32'
 3 Bed 2-1/2 Bath
 1760 sq ft

FREEMPORT

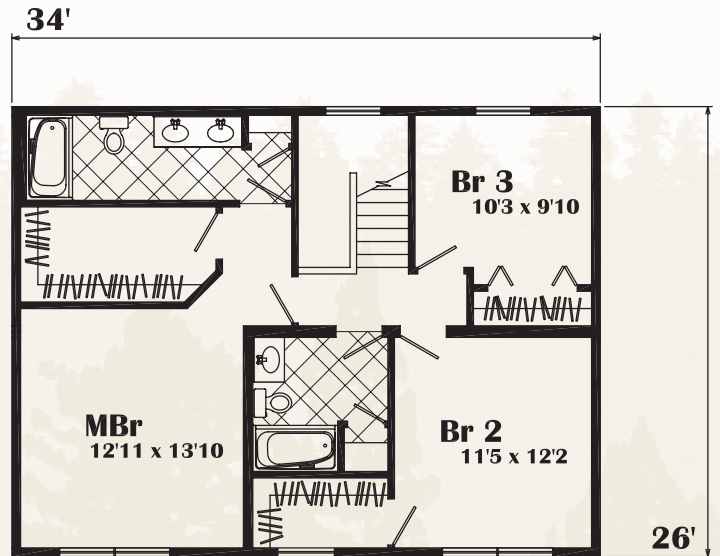


KENTON

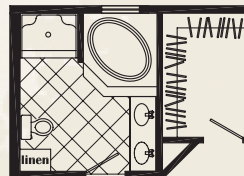
26' x 34'
3 Bed 2-1/2 Bath
1768 sq ft



First Floor



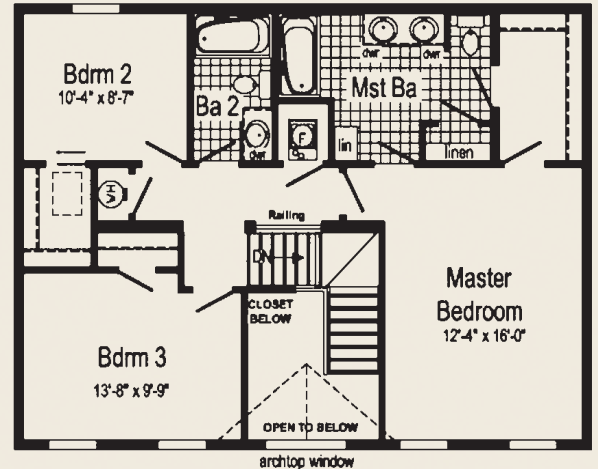
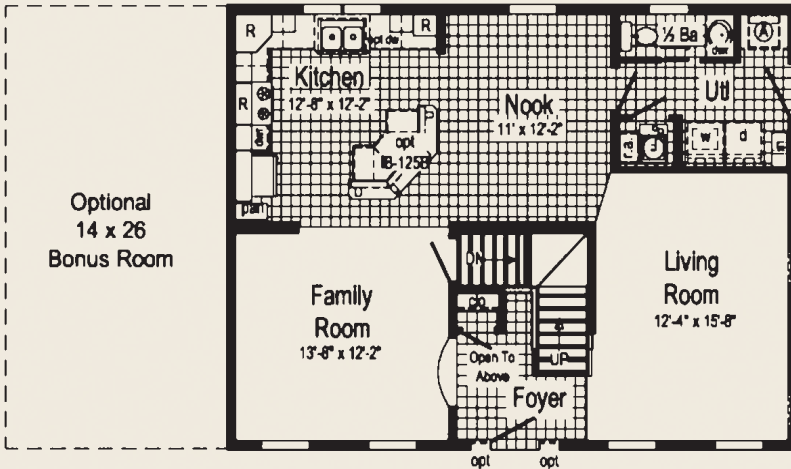
Second Floor



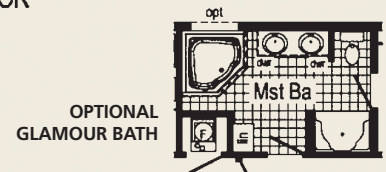
Opt. Master Bath

HZ304A

26' x 36'
3 Bed 2-1/2 Bath
1812 sq ft



SECOND FLOOR

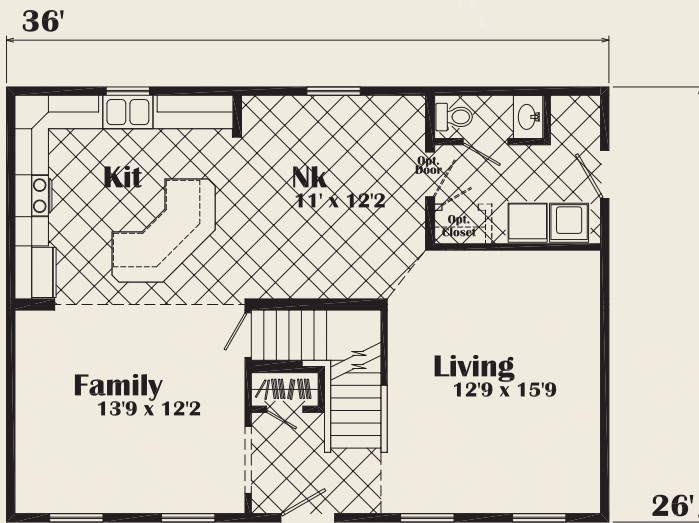


OPTIONAL GLAMOUR BATH

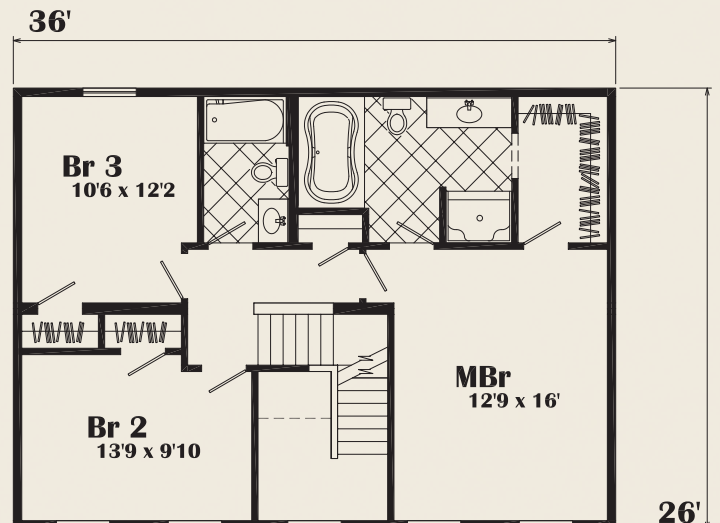


26' x 36'
 3 Bed 2-½ Bath
 1872 sq ft

FERGUSON



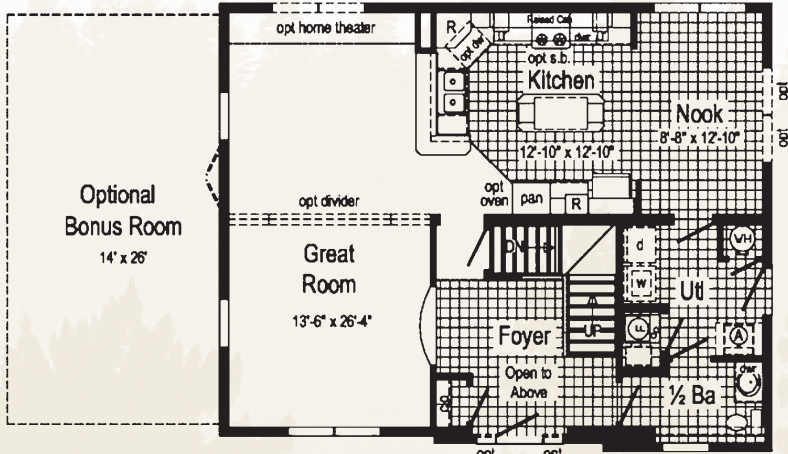
First Floor



Second Floor

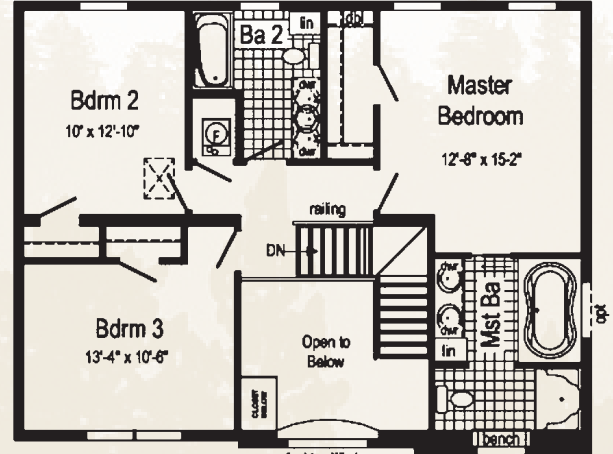
HS160A

28' x 36'
3 Bed 2-1/2 Bath
1852 sq ft



MAIN FLOOR

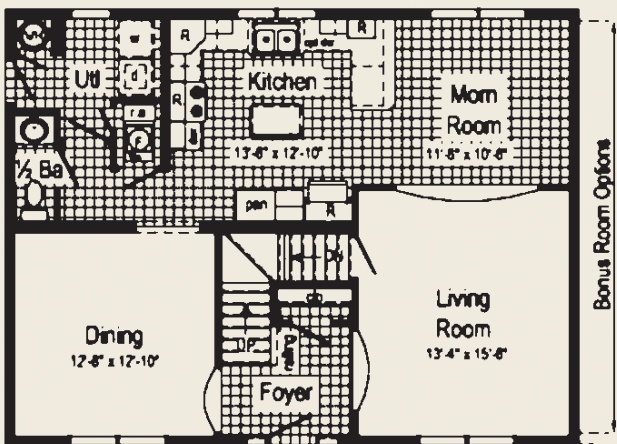
(A) = Std frz spc, opt utl sink, pet shwr or bench.



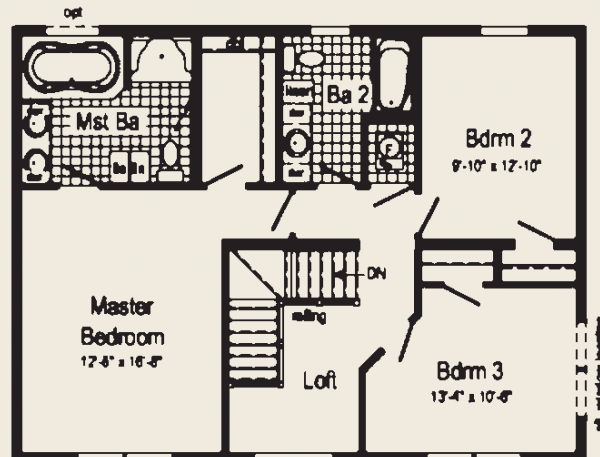
SECOND FLOOR

HS170A

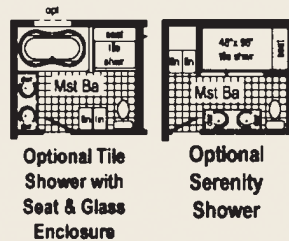
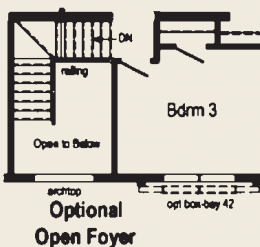
28' x 36'
3 Bed 2-1/2 Bath
1968 sq ft



MAIN FLOOR

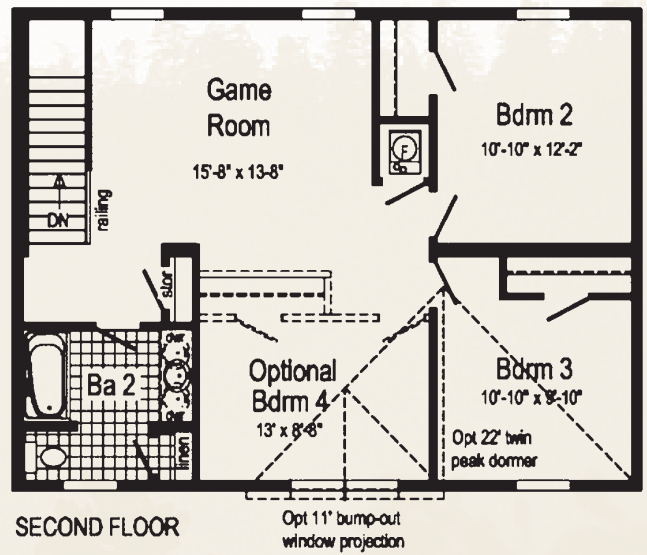
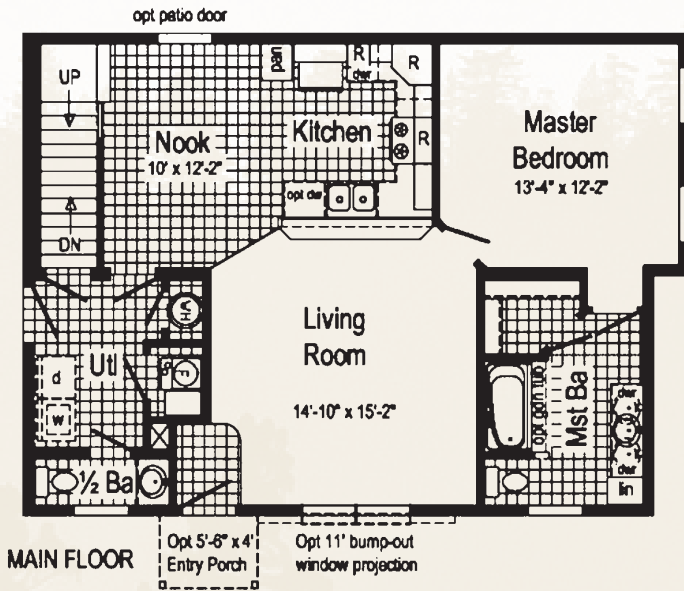


SECOND FLOOR



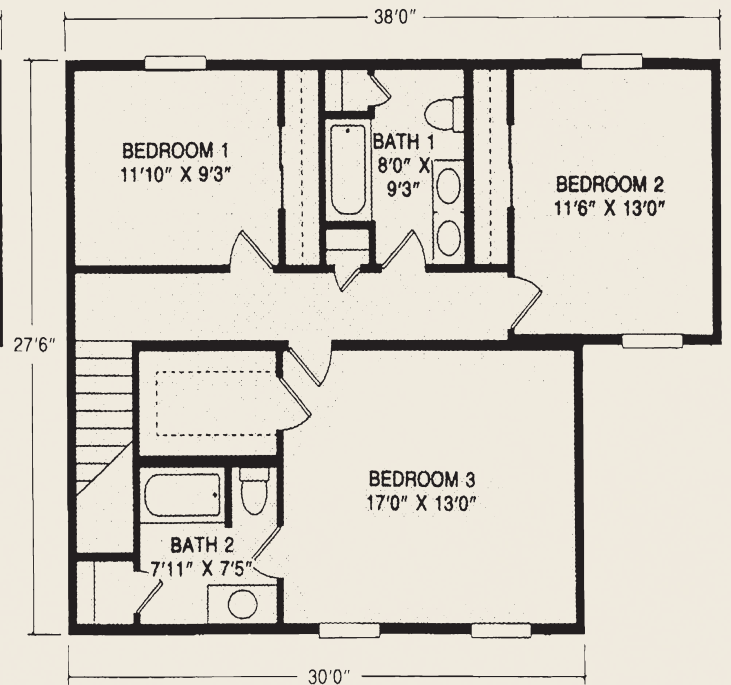
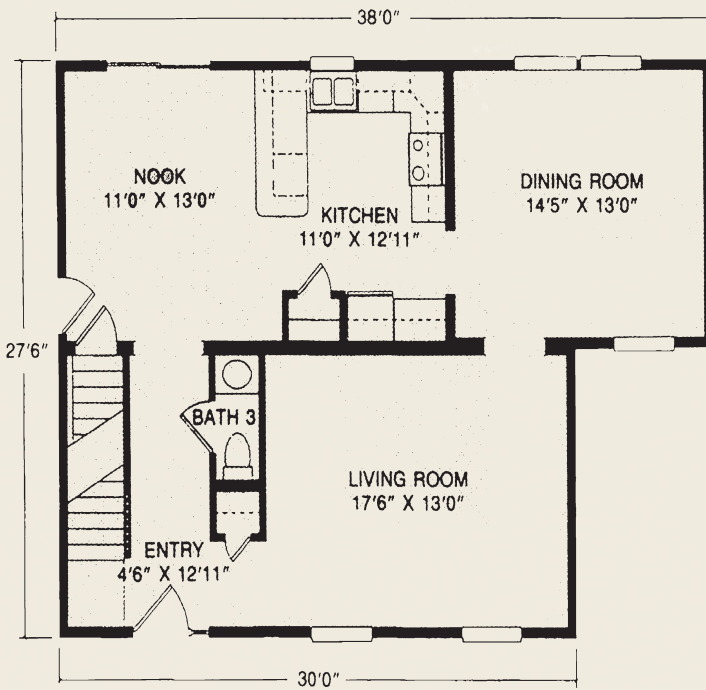
26' x 37'135'
 3 Bed 2-1/2 Bath
 1846 sq ft

HZ302A



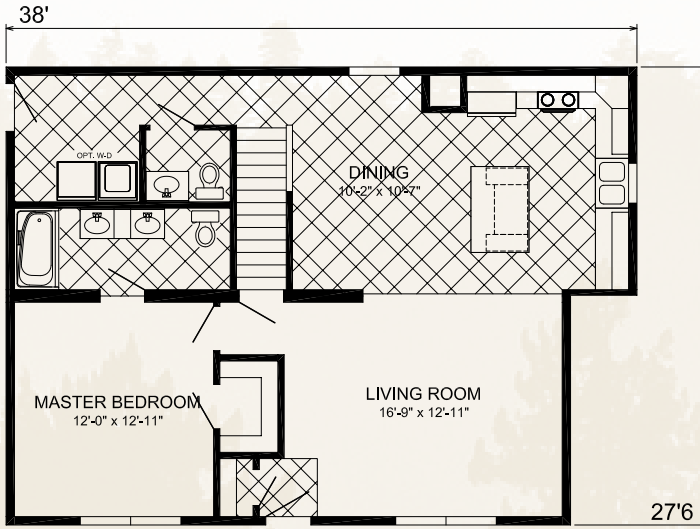
27'6" x 38'130'
 3 Bed 2-1/2 Bath
 1870 sq ft

JAMESTOWN

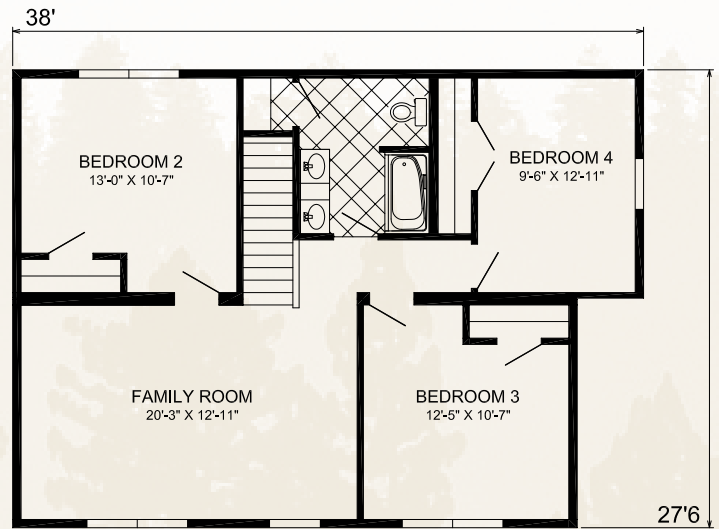


LE-214

27'6" x 38'3/4'
4 Bed 2-1/2 Bath
2016 sq ft



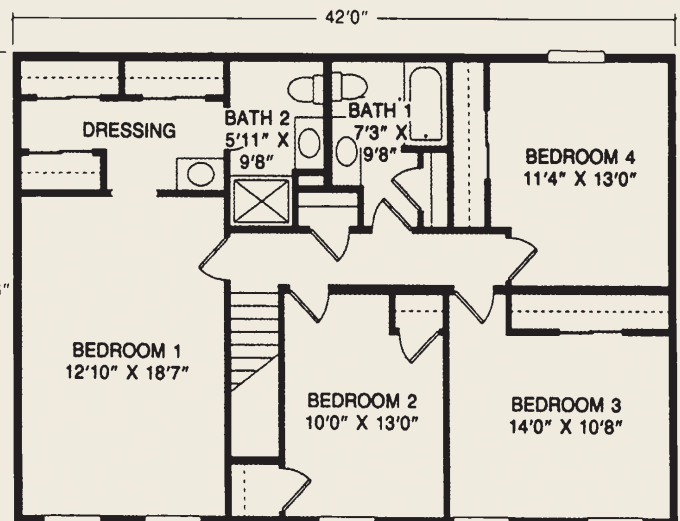
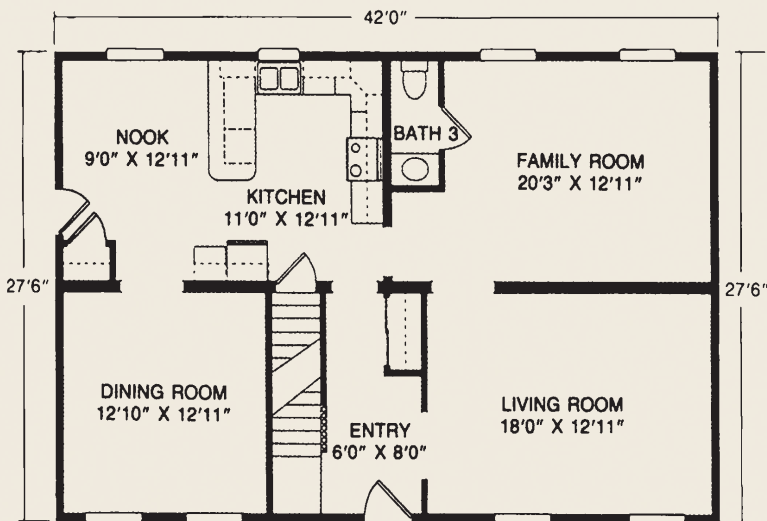
FIRST FLOOR



SECOND FLOOR

GETTYSBURG

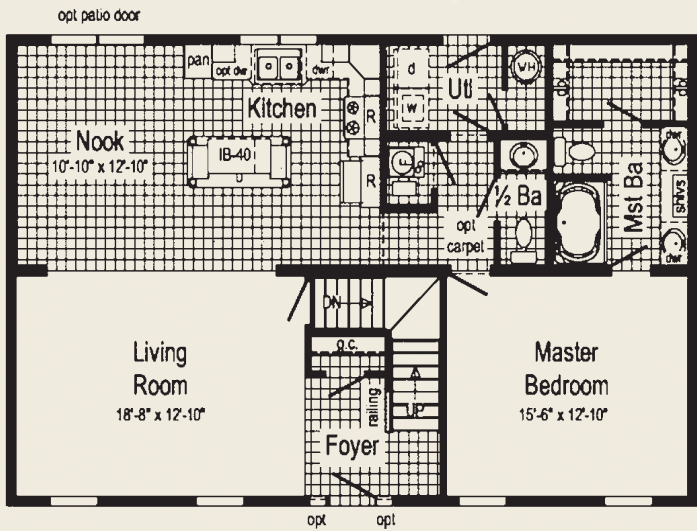
27'6" x 42'
4 Bed 2-1/2 Bath
2310 sq ft



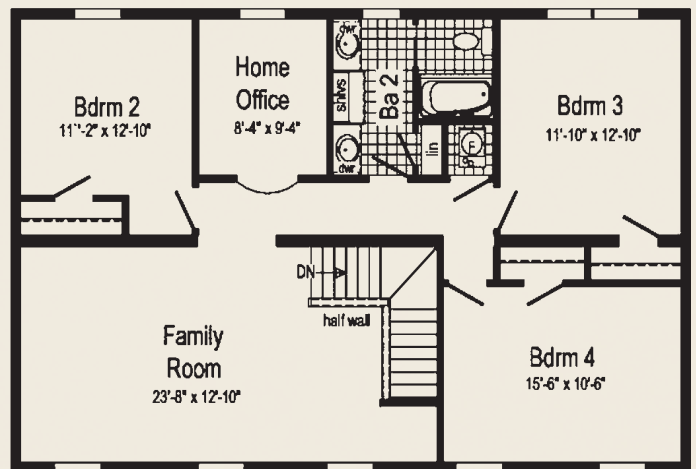


27'6" x 44'
 4 Bed 2-½ Bath
 2406 sq ft

HS125A



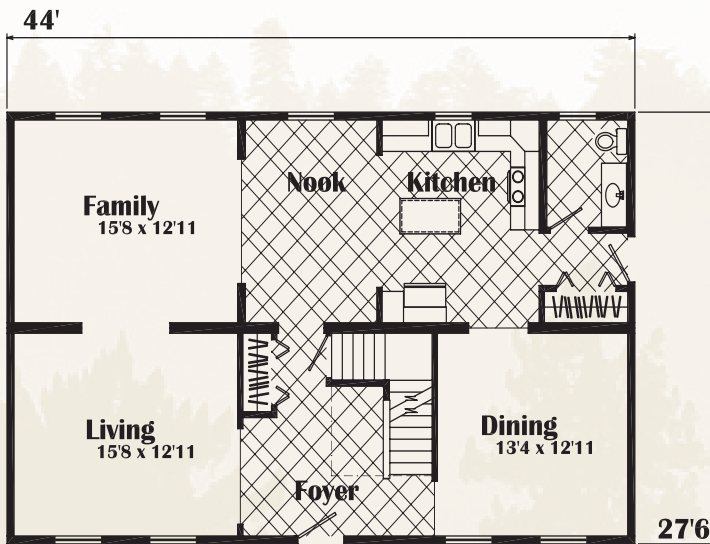
MAIN FLOOR



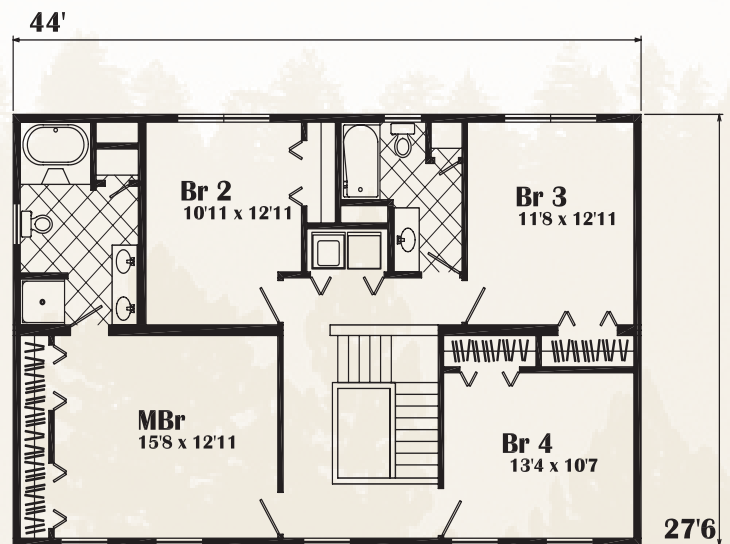
SECOND FLOOR

TRENTON

27'6" x 44'
4 Bed 2-½ Bath
2420 sq ft



First Floor

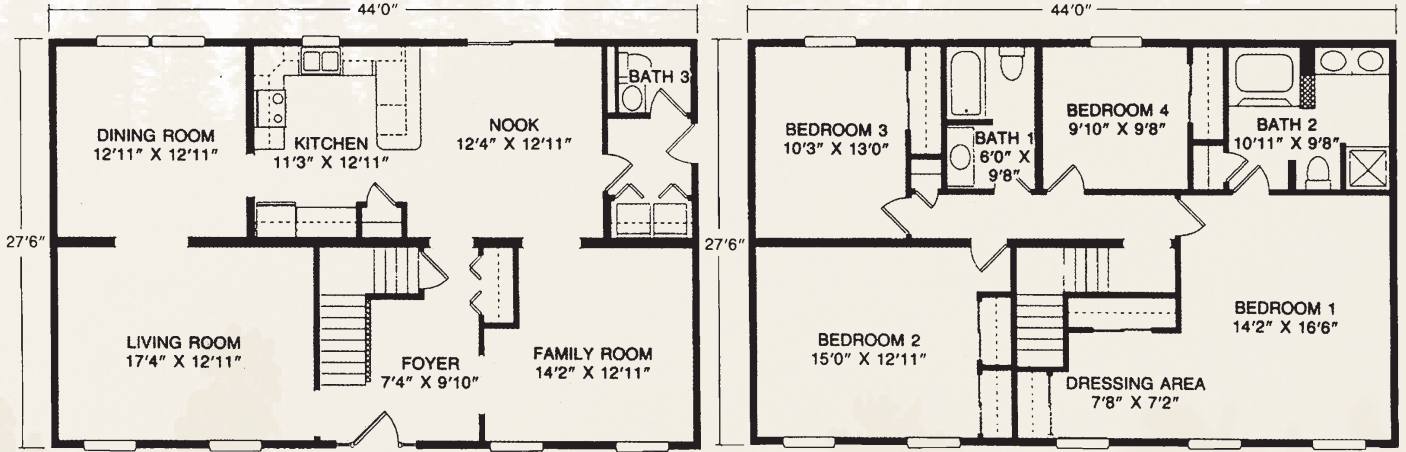


Second Floor



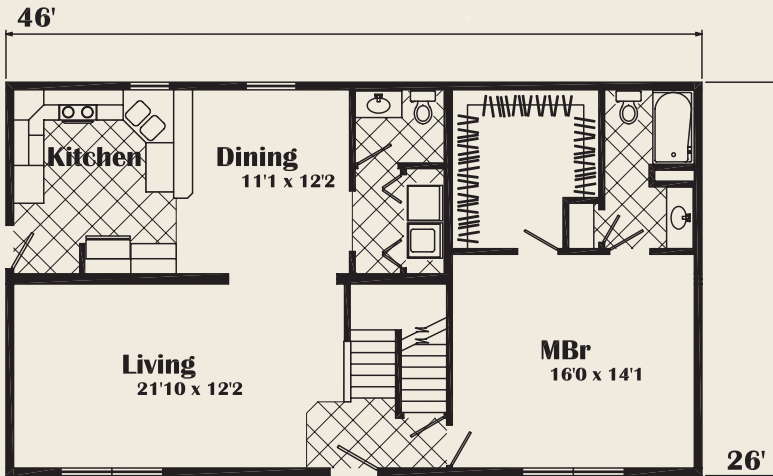
27'6" x 44'
 4 Bed 2-½ Bath
 2420 sq ft

WILLIAMSBURG

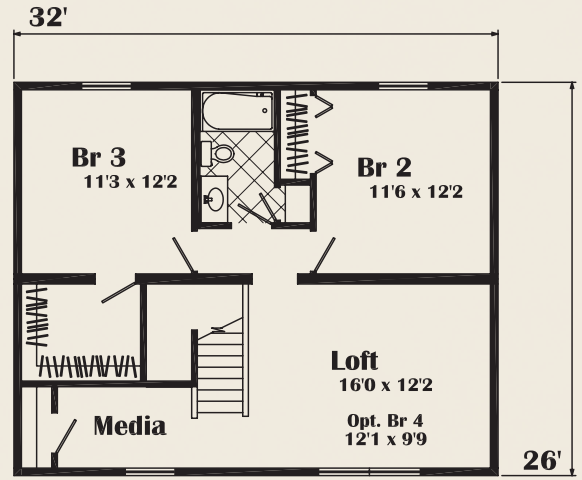


26' x 46'32"
 3 Bed 2-½ Bath
 2023 sq ft

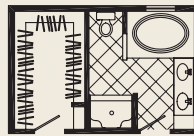
GOODWELL



First Floor



Second Floor

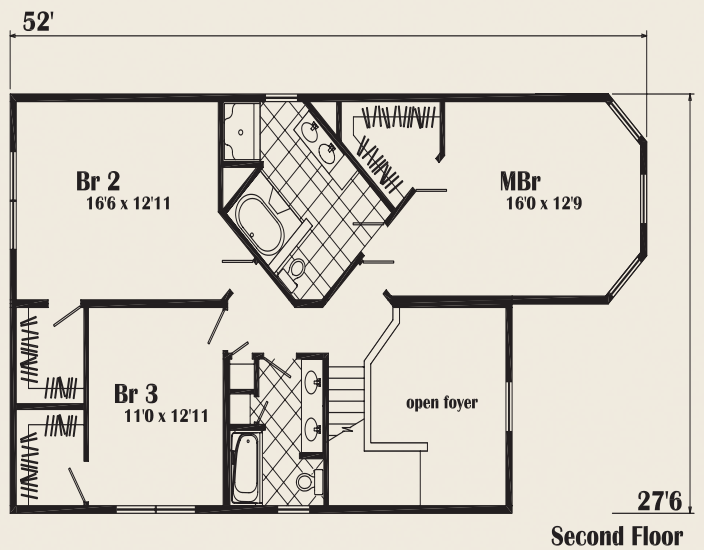
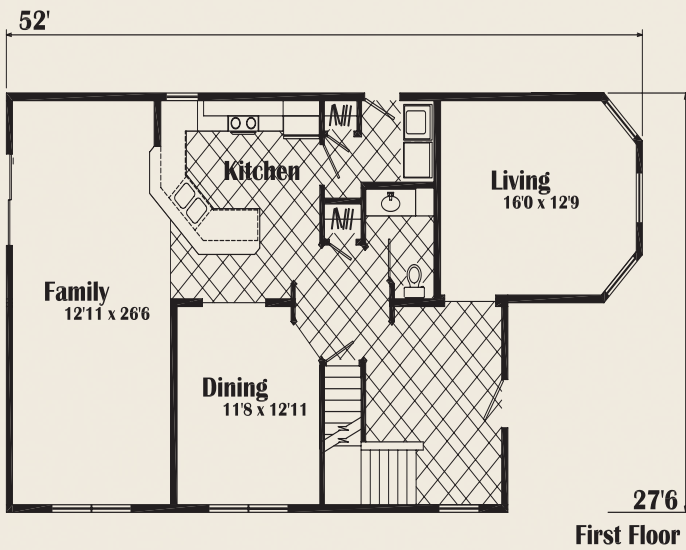


opt. MBath



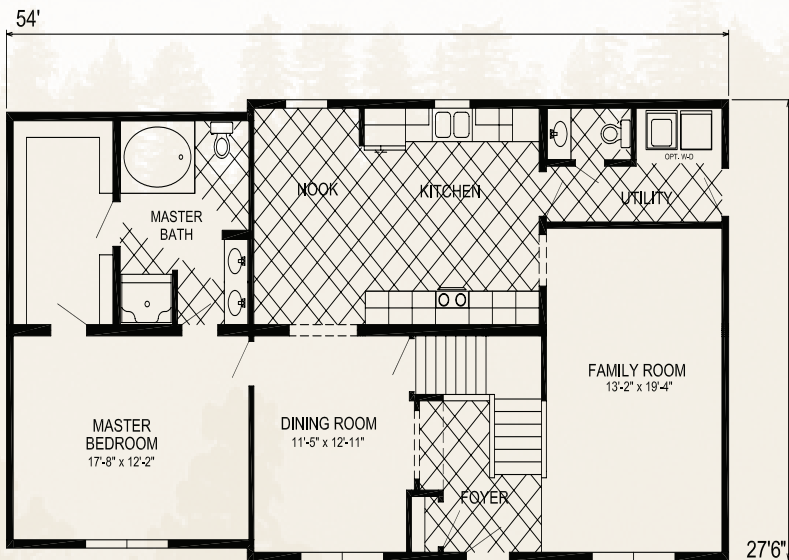
HAMPTON

27'6" x 52'
 3 Bed 2-1/2 Bath
 2516 sq ft

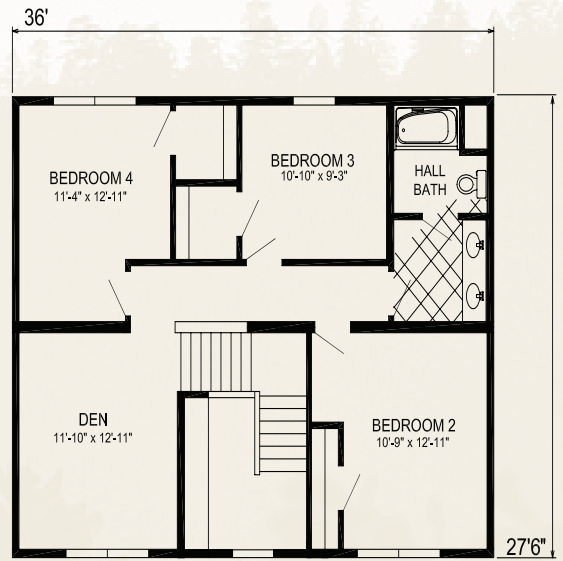


27'6" x 54'/36'
4 Bed 2-1/2 Bath
2520 sq ft

LE-212



First Floor



Second Floor





FECTEAU *Homes!*

FAMILY OWNED & OPERATED

WWW.FECTEAUHOMES.COM

350 RIVER STREET MONTPELIER, VERMONT 05602

OFFICE: 802-229-2721 • 800-391-7488 • FAX: 802-223-4892